



DLL - MLL - SLL - GR - SONIC
DENSITY - NEUTRON

COMPANY KAROON GAS PTY. LTD.

WELL MEGASCOLIDES-1 RE ST1

FIELD WILDCAT

PROVINCE/COUNTY VICTORIA

COUNTRY/STATE AUSTRALIA

LOCATION 145°, 52', 50.8" E, -38°, 13', 57.5" S

FIELD PRINT

LSD SEC TWP RGE Other Services
FORMATION TESTER

API Number
Permit Number PEP162

Permanent Datum M.S.L. , Elevation 0 metres

Log Measured From R.T. @ 125.2M above Permanent Datum

Drilling Measured From K.B.

Elevations:
KB 125.20 metres
DF 124.20 metres
GL 120.00 metres

Date 27-DEC-2006

Run Number TWO

Depth Driller 1980.00 metres

Depth Logger 1974.55 metres

First Reading 1973.70 metres

Last Reading 1585.00 metres

Casing Driller 504.00 metres

Casing Logger

Bit Size 8.50 inches

Hole Fluid Type KCL POLYMER

Density / Viscosity 1.08 g/c3 20.00 CP

PH / Fluid Loss 9.80 6.40 ml/30Min

Sample Source FLOWLINE

Rm @ Measured Temp 0.269 @ 25.0 ohm-m

Rmf @ Measured Temp 0.241 @ 25.0 ohm-m

Rmc @ Measured Temp 0.296 @ 25.0 ohm-m

Source Rmf / Rmc FILTER PRESS

Rm @ BHT 0.127 @ 77.0 ohm-m

Time Since Circulation 10.5 HRS

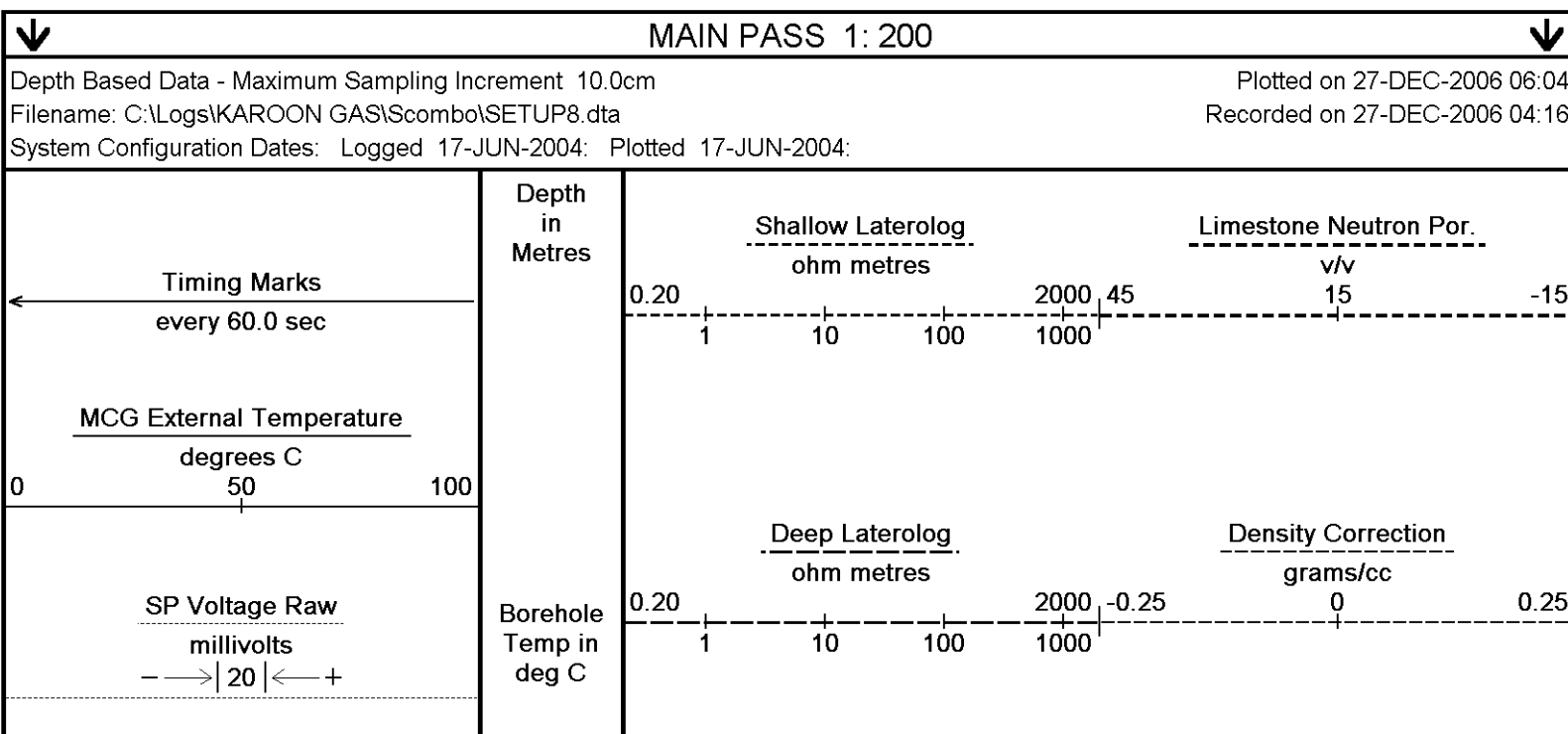
Max Recorded Temp 77.00 deg C

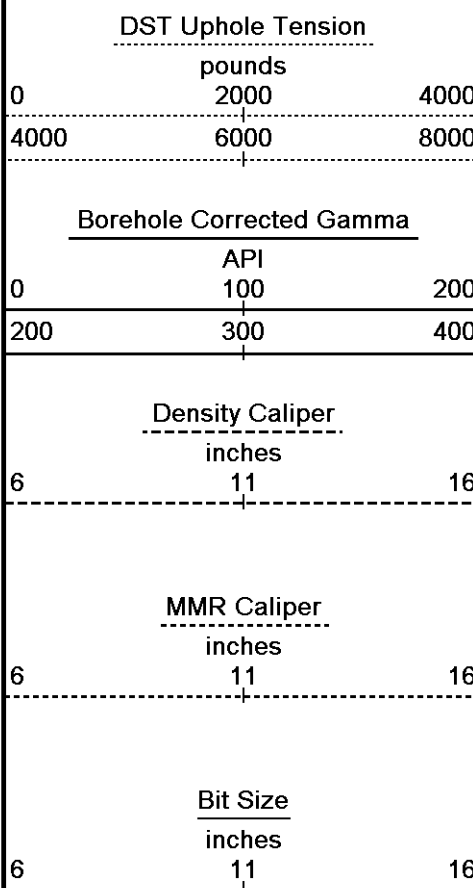
Equipment Name SCOMBO / MFT

Equipment / Base 2 SALE

Recorded By E. MANN
Witnessed By DAVE
CIRC. STOP 1700 26/12

All interpretations are opinions based on inferences from electrical or other measurements and we cannot, and do not, guarantee the accuracy or correctness of any interpretations, and we shall not, except in the case of gross or wilful negligence on our part, be liable or responsible for any loss, costs, damages or expenses incurred or sustained by anyone resulting from any interpretation made by any of our officers, agents or employees. These interpretations are also subject to our general terms and conditions in our price schedule.

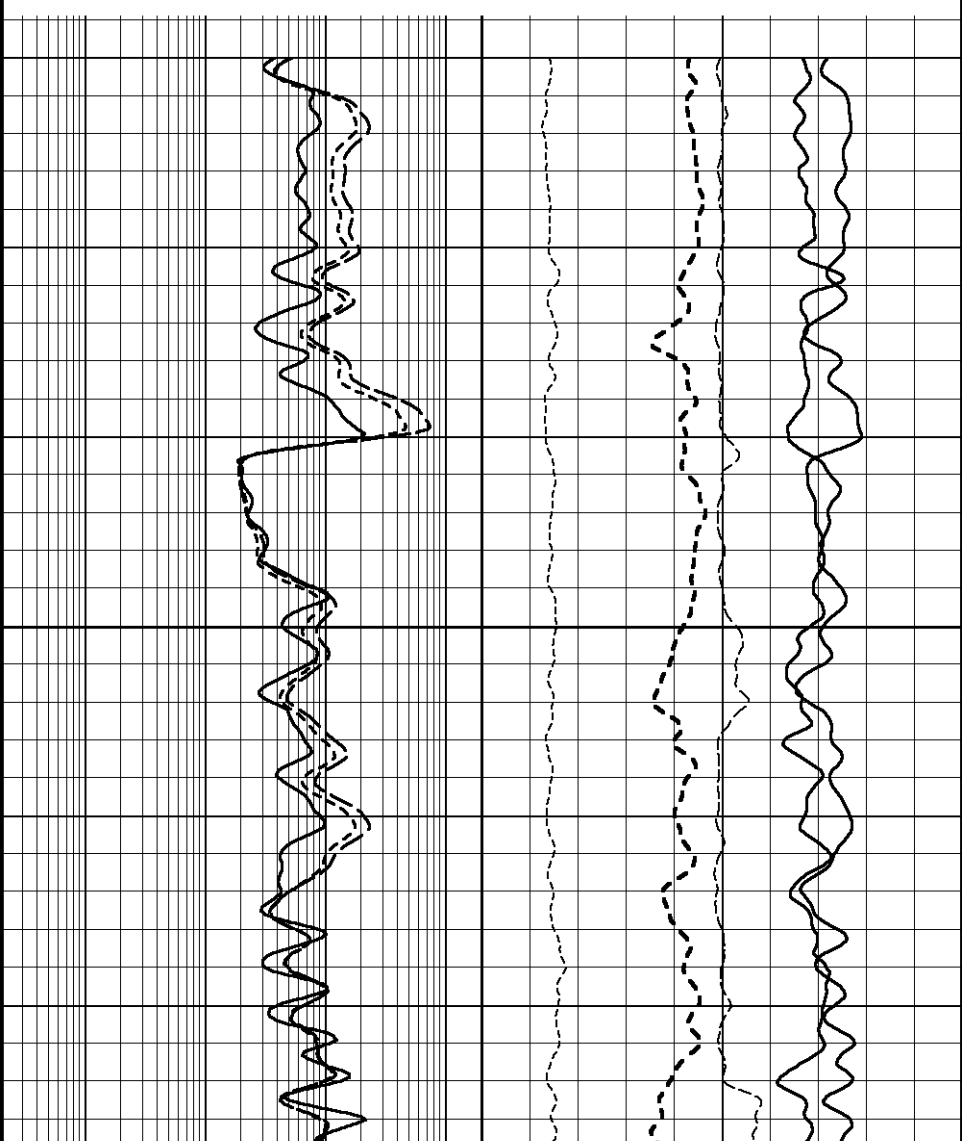
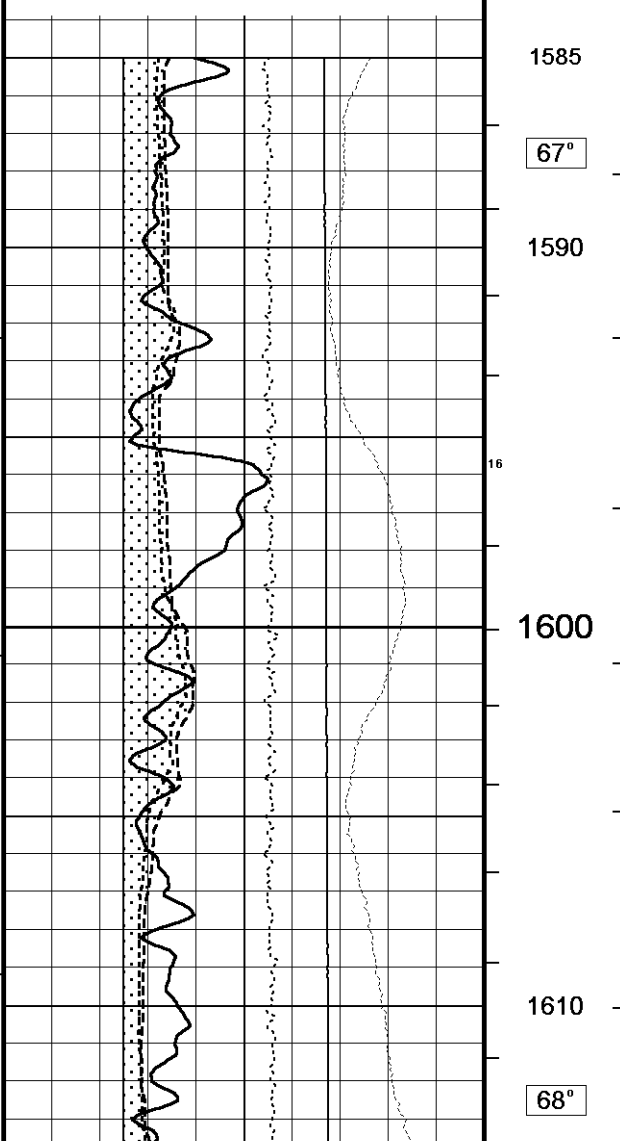
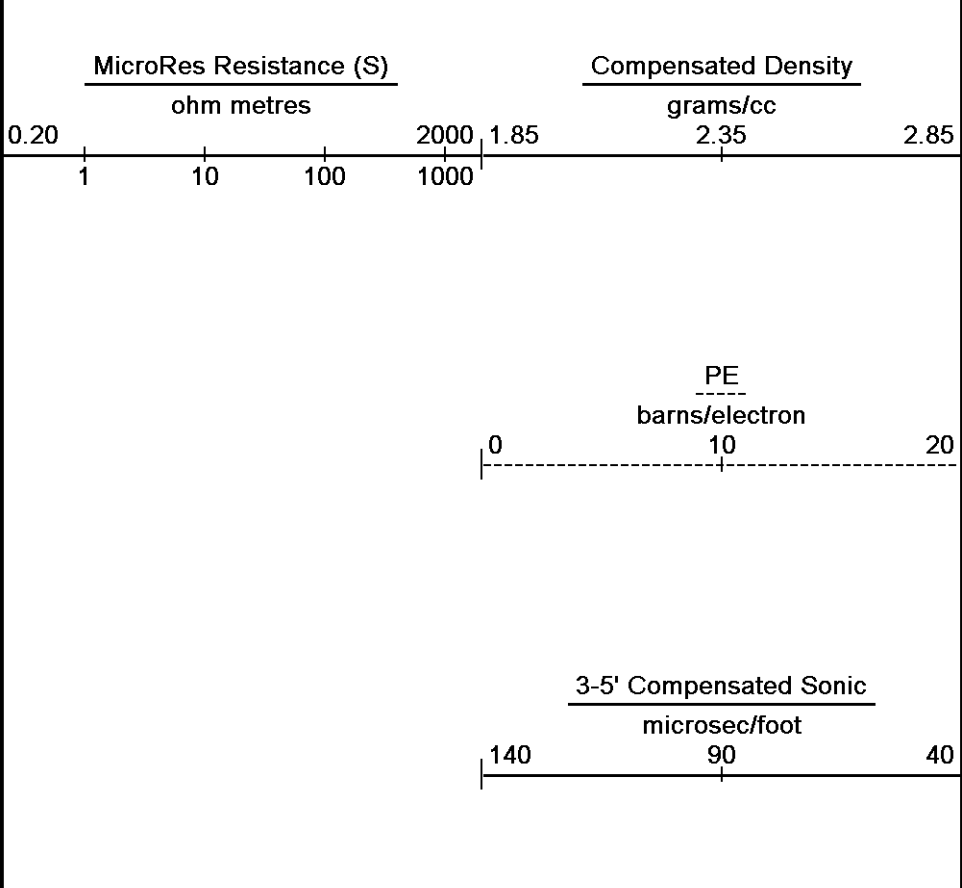




HVI every 0.1 cu m

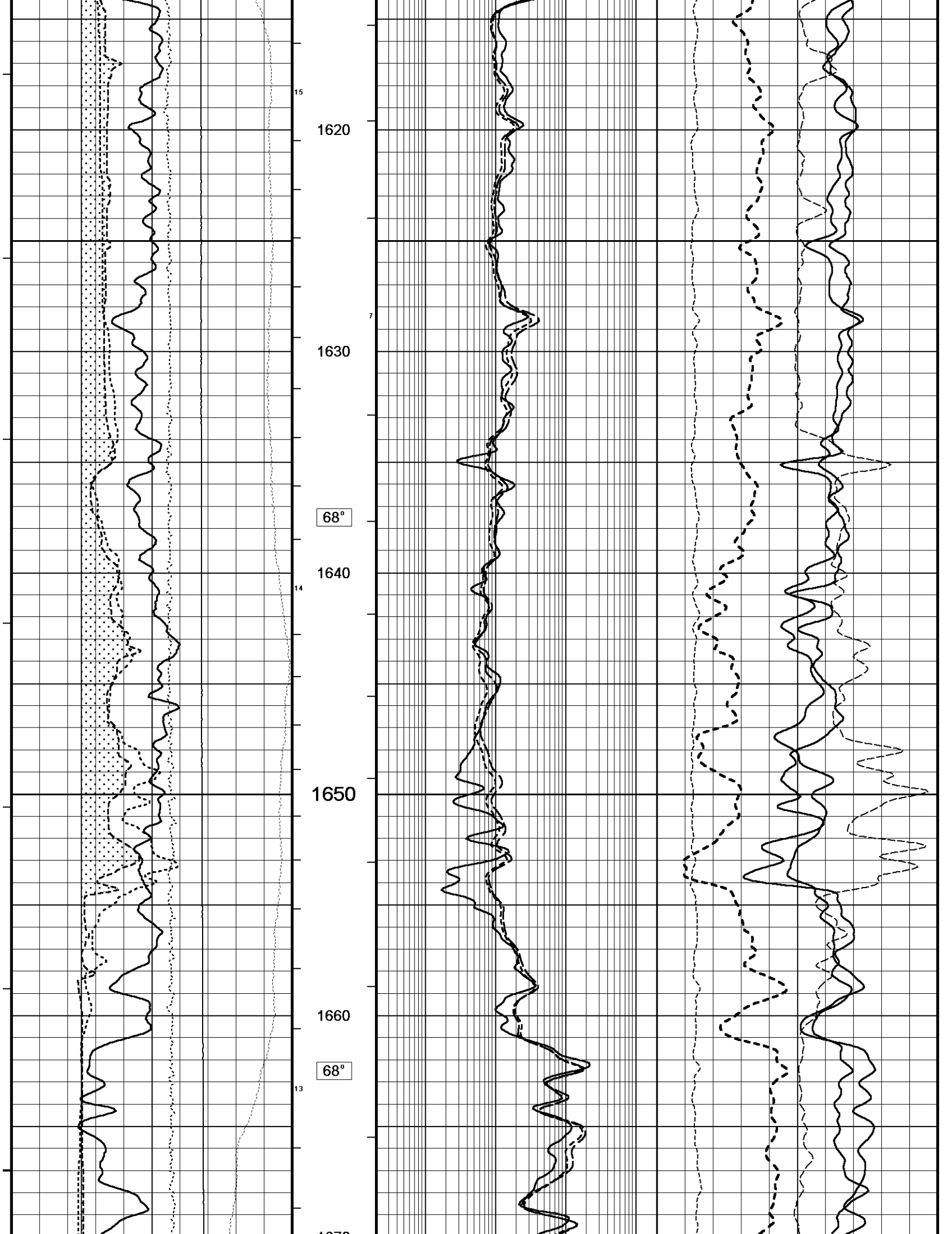
Annular Integral every 0.1 cu m

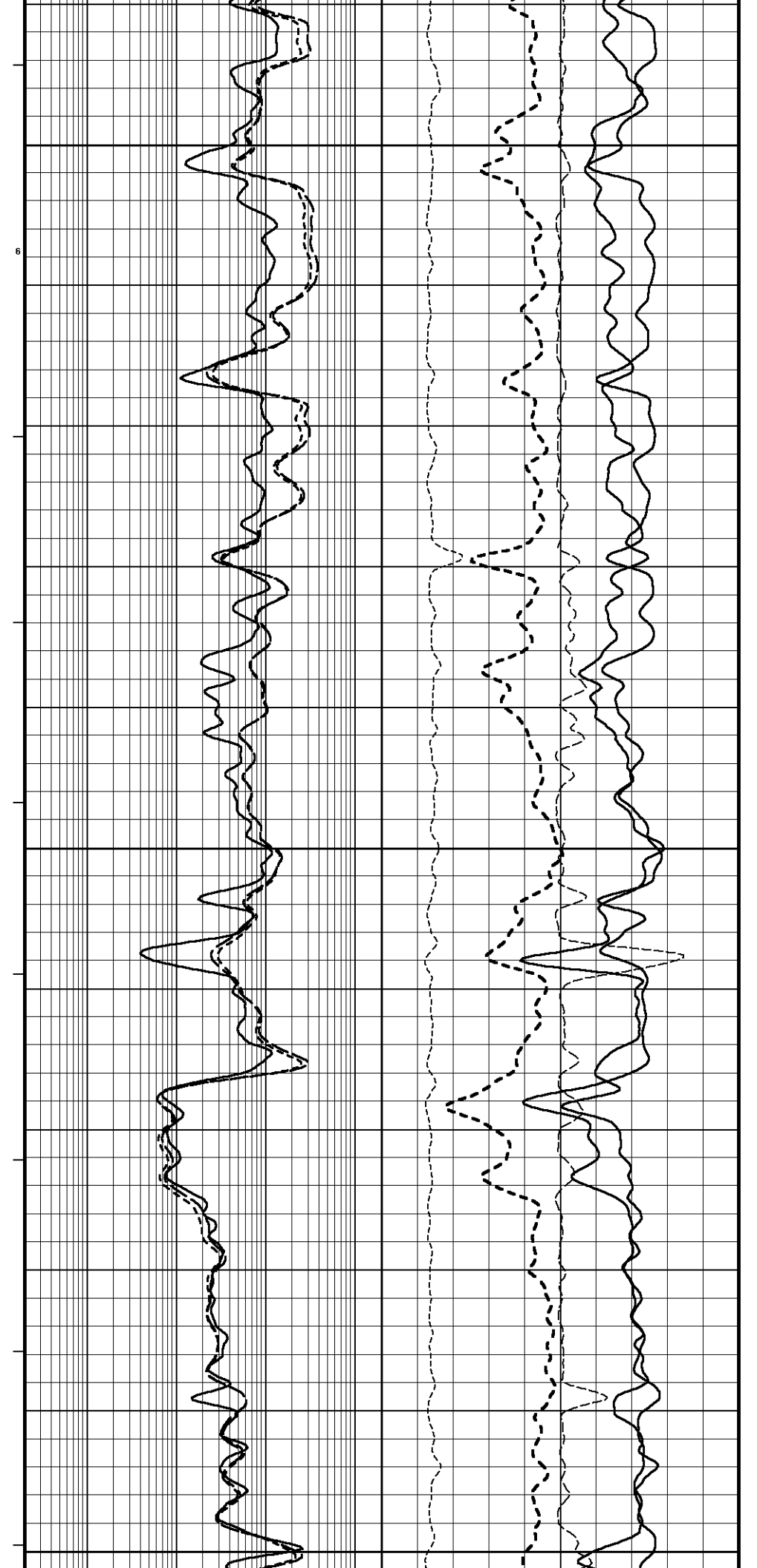
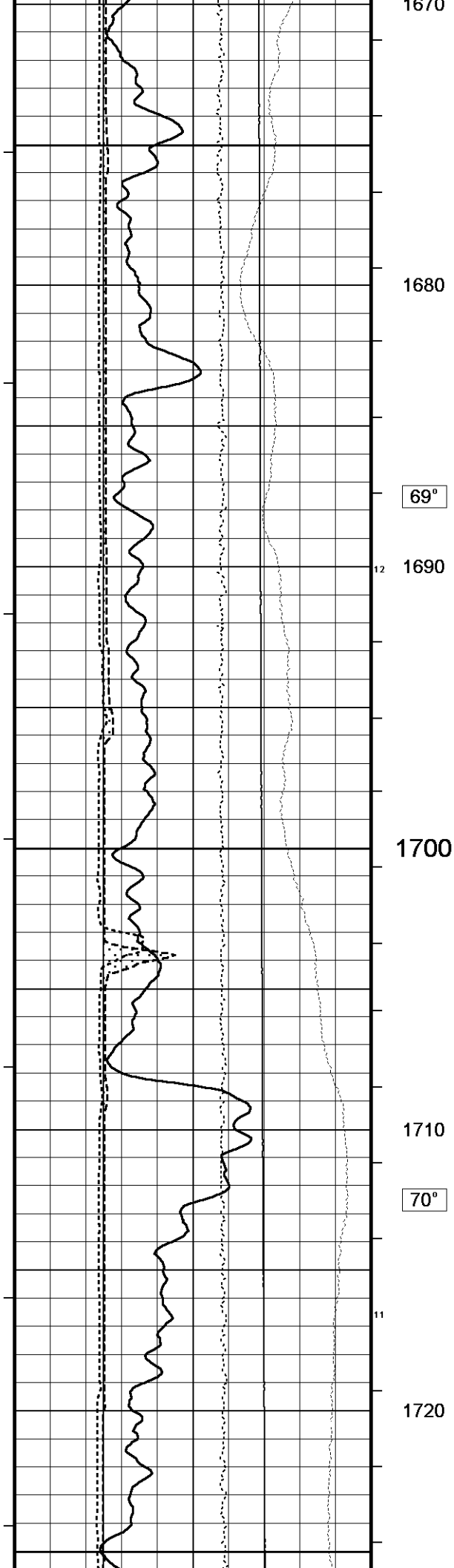
Replay Scale 1:200

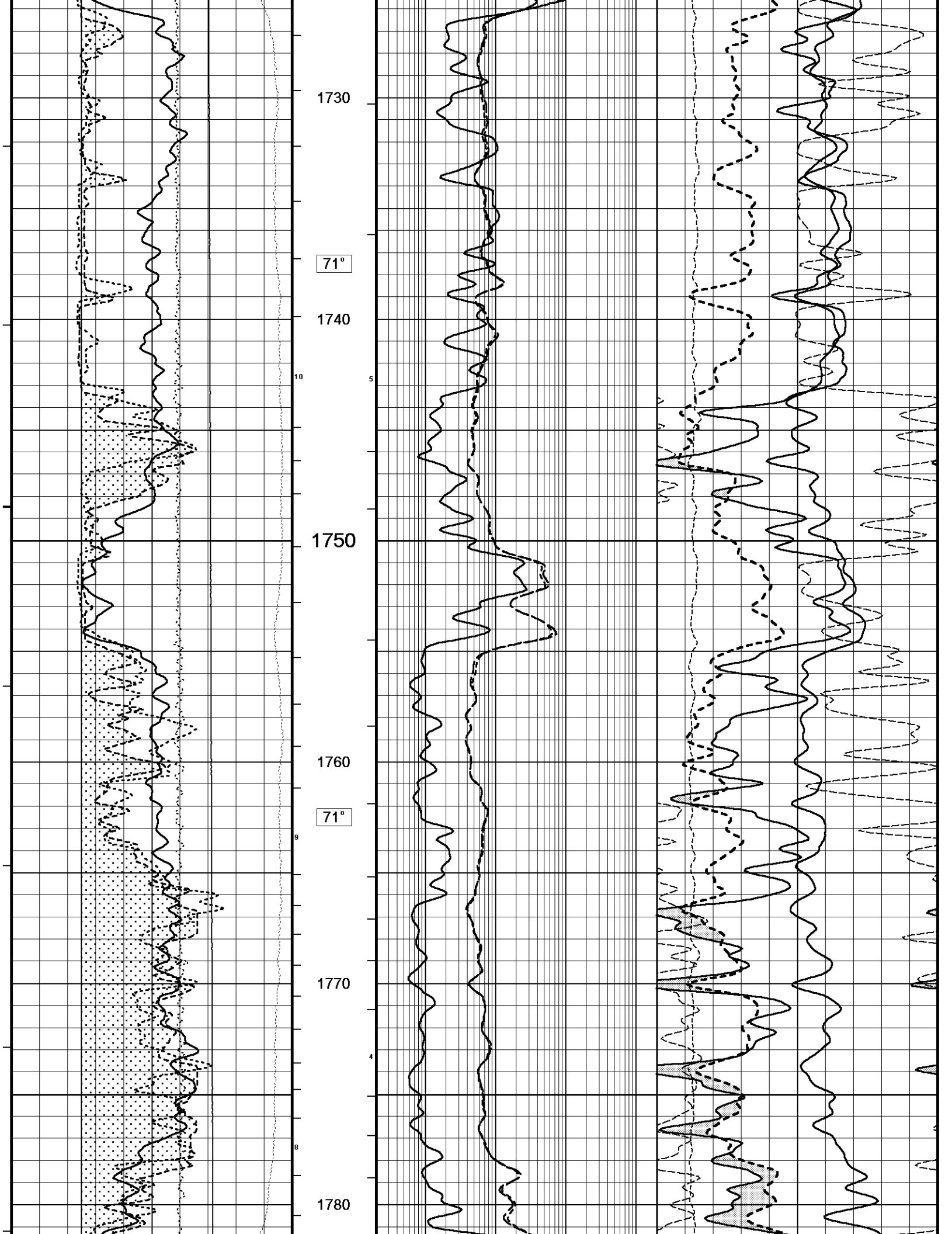


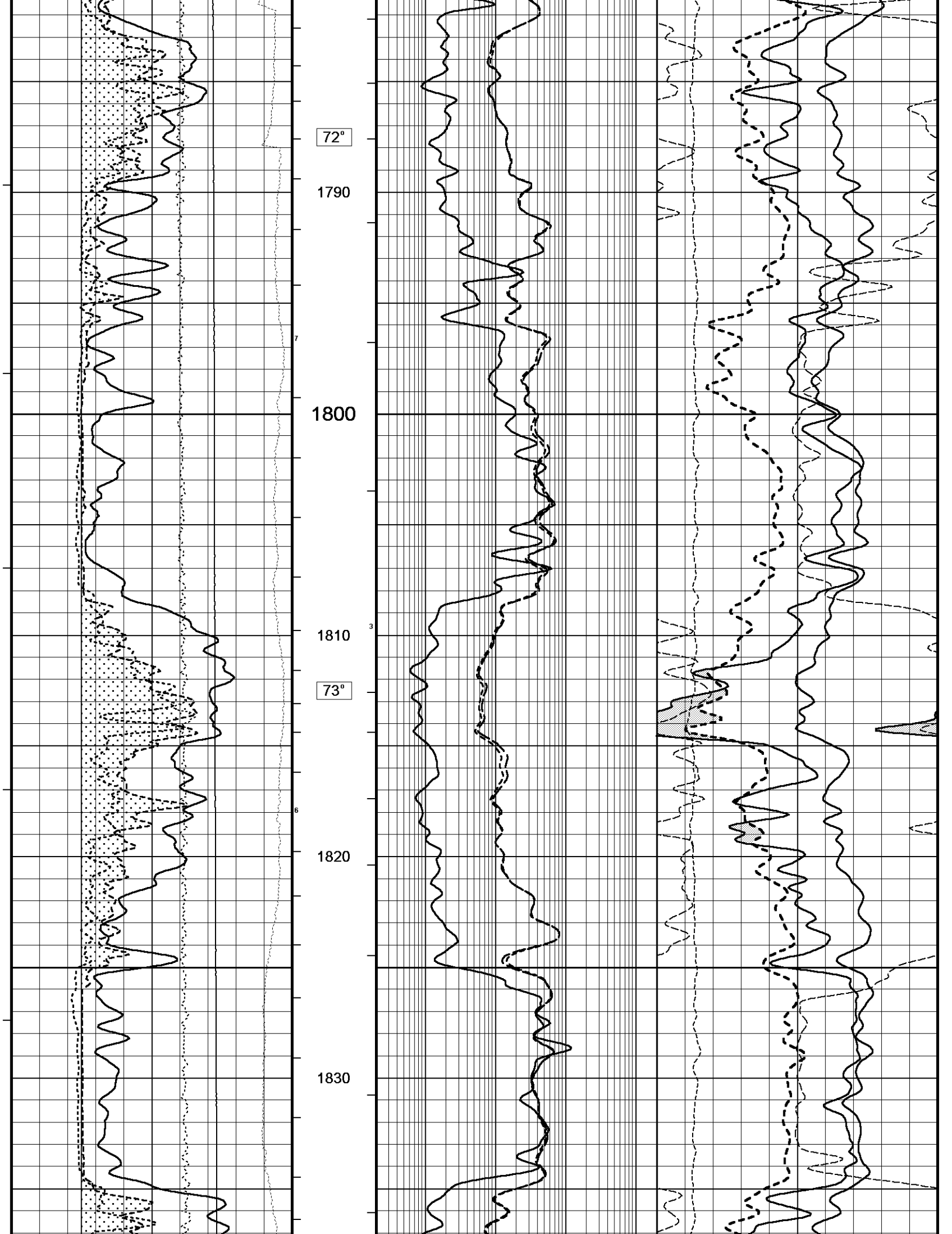
67°

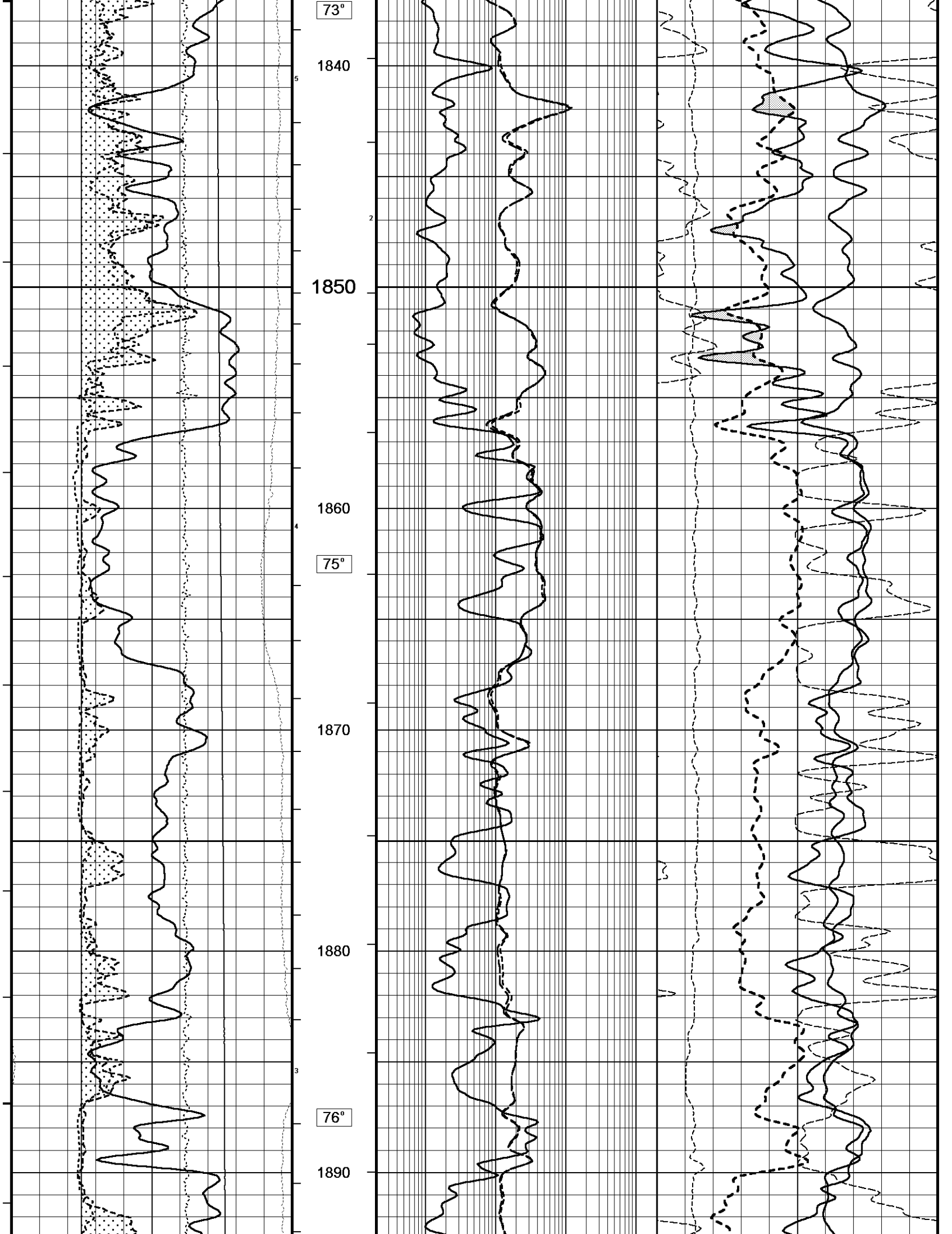
68°

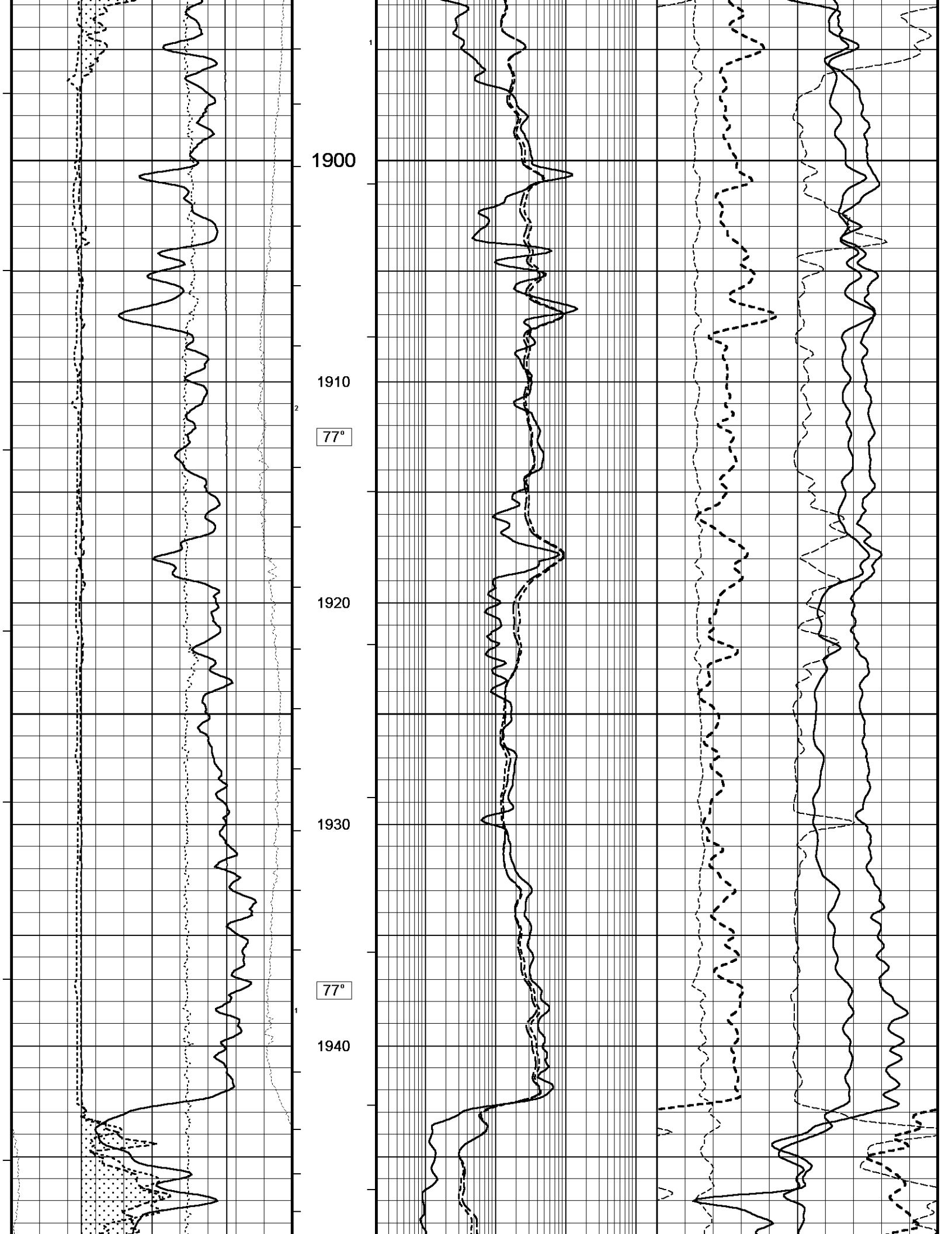


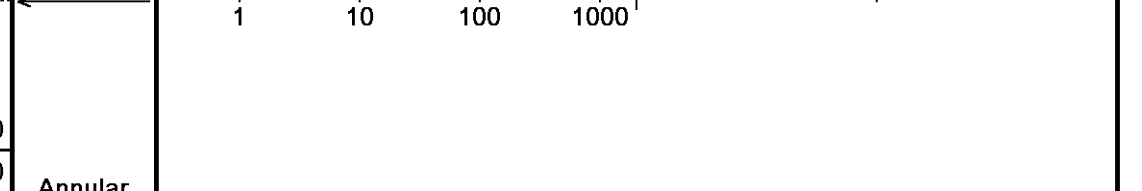
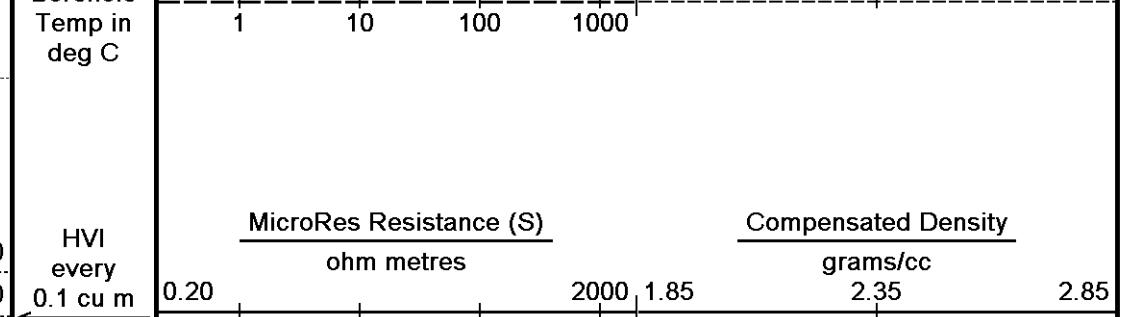
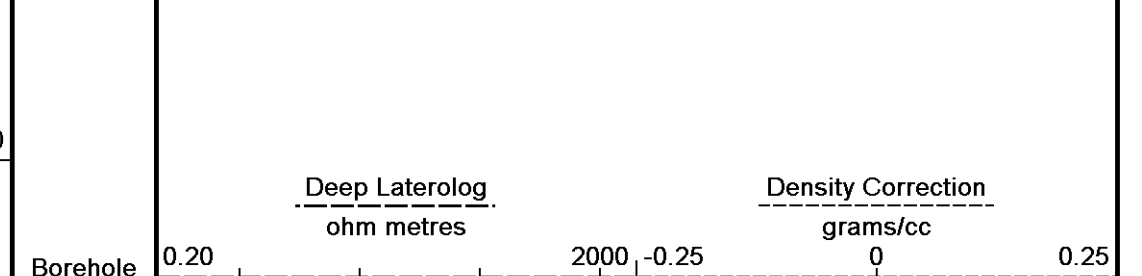
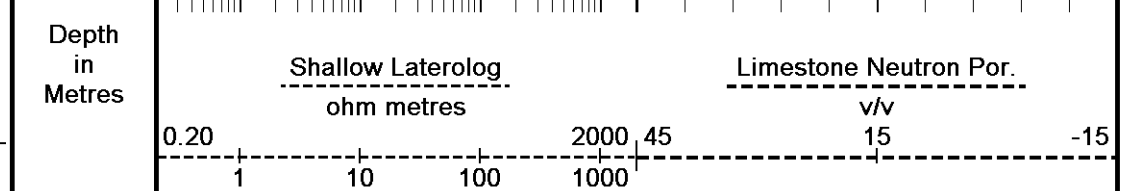
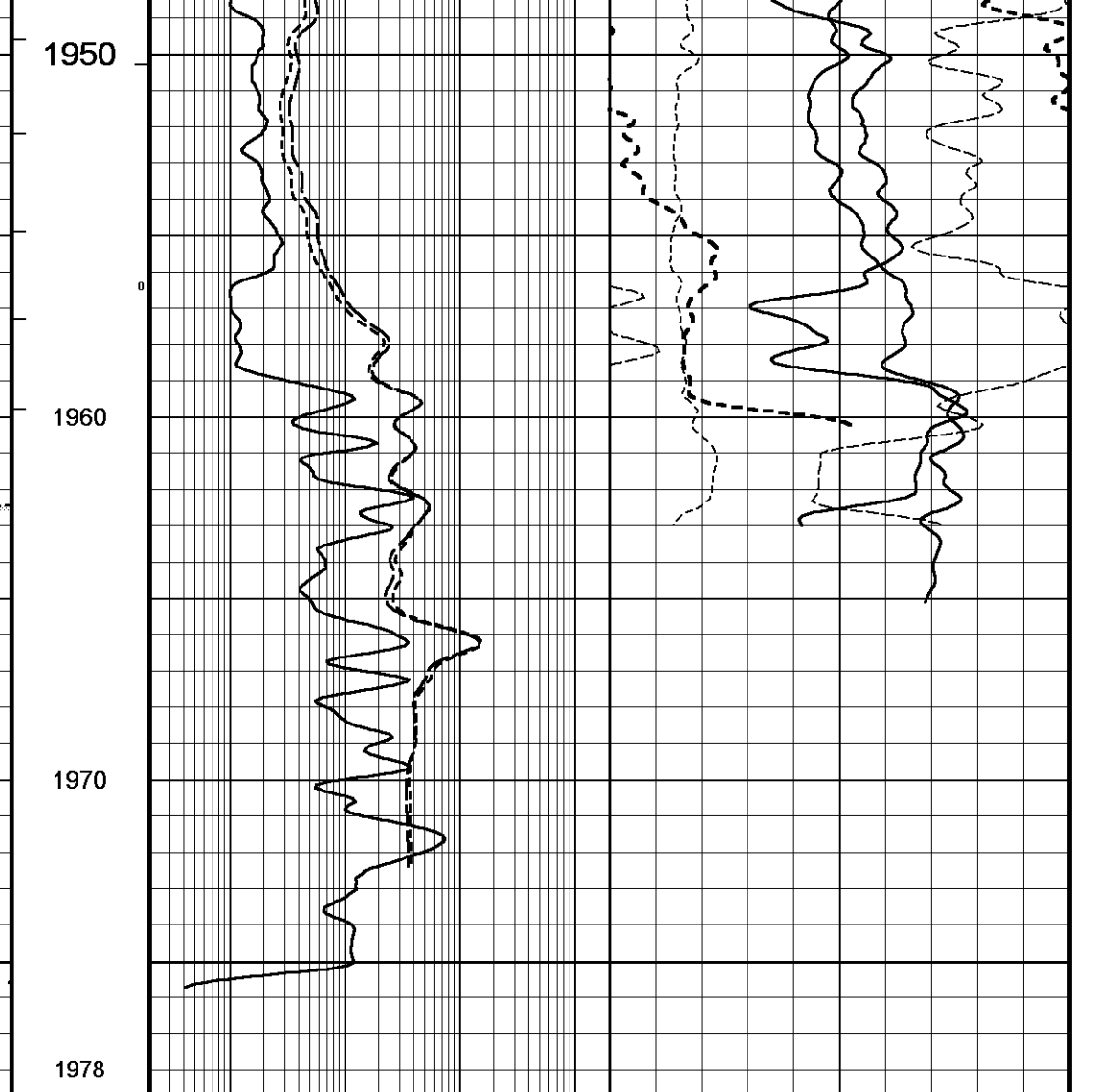
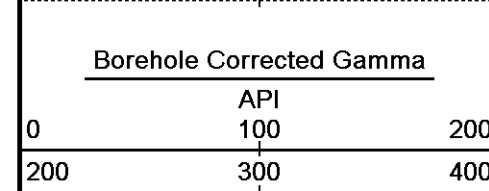
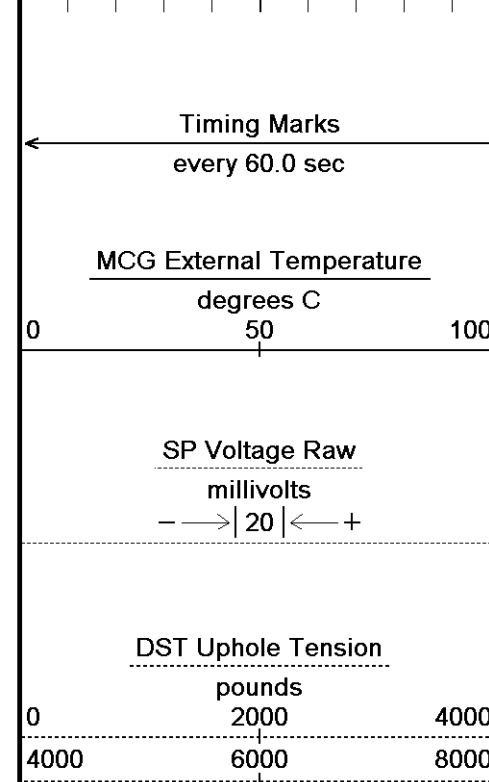
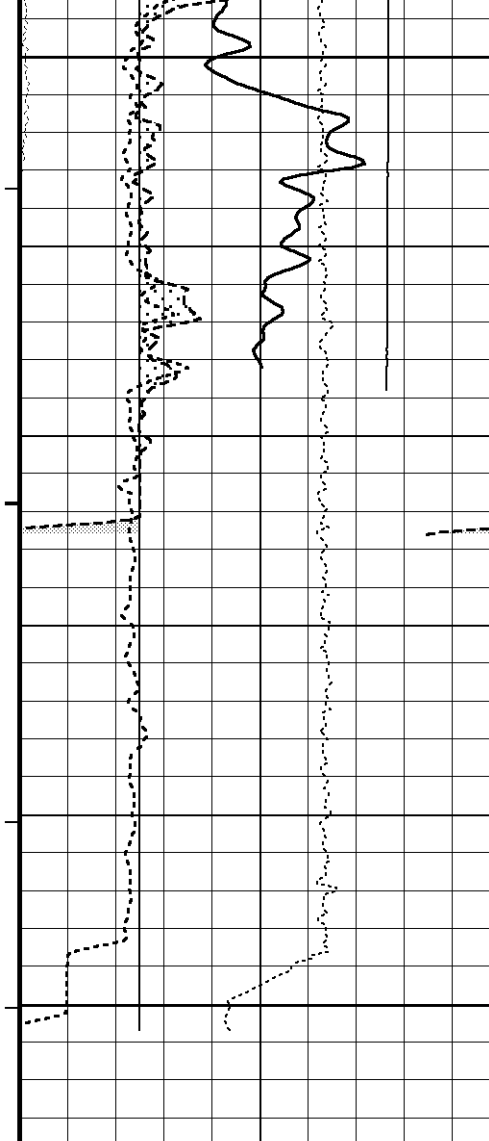


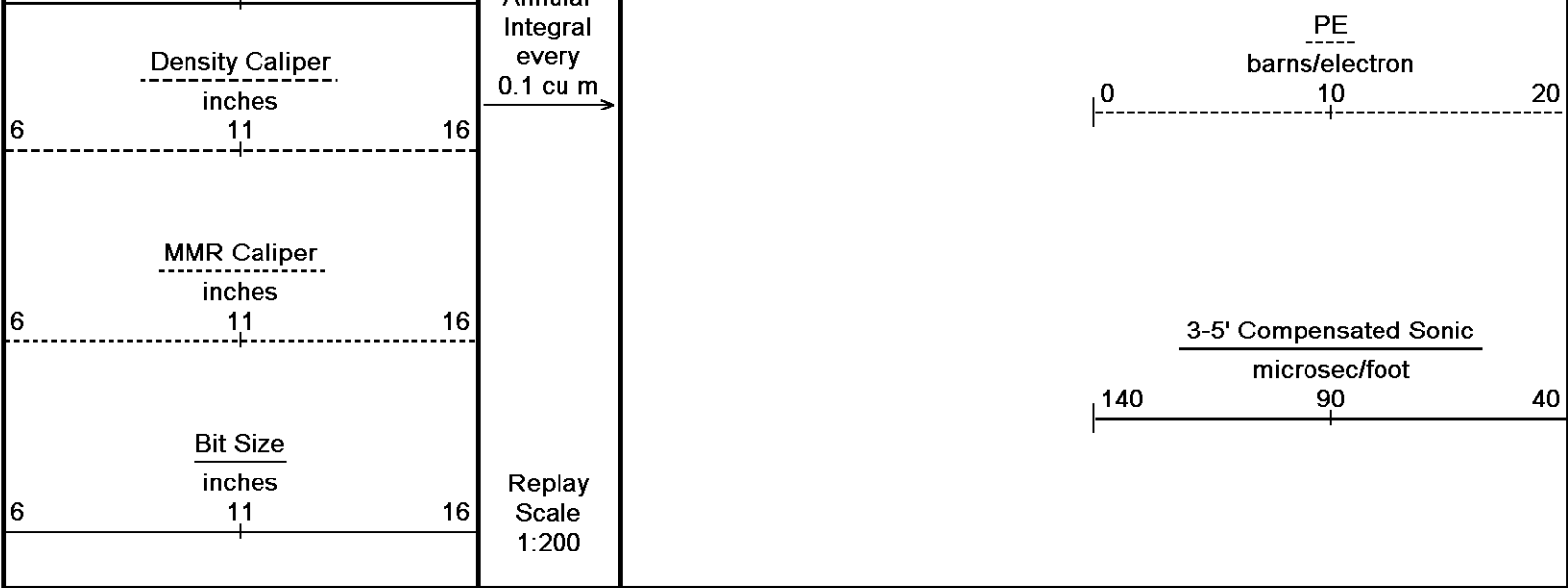












Depth Based Data - Maximum Sampling Increment 10.0cm
 Filename: C:\Logs\KAROON GAS\Scombo\SETUP8.dta
 System Configuration Dates: Logged 17-JUN-2004: Plotted 17-JUN-2004:

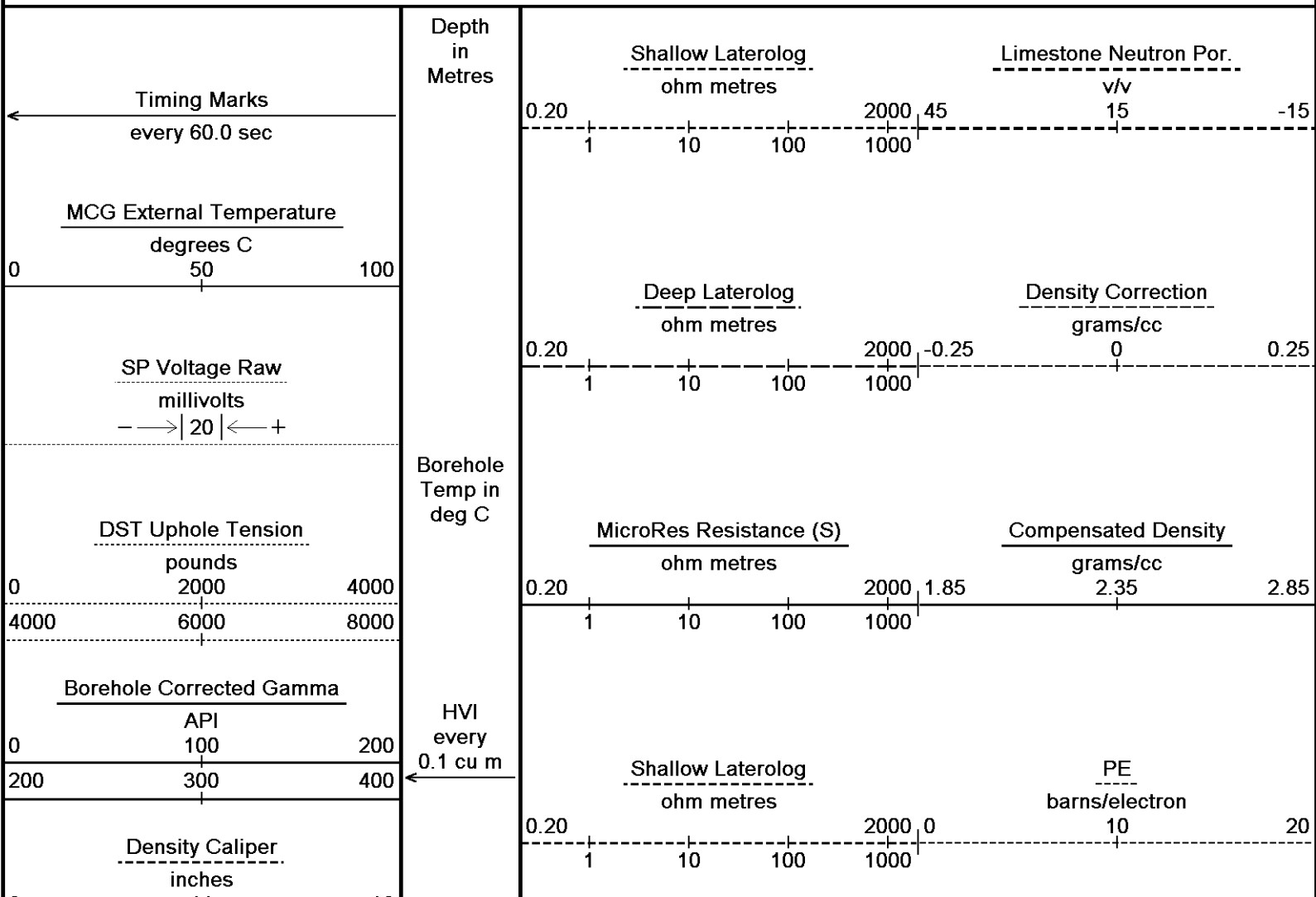
Plotted on 27-DEC-2006 06:04
 Recorded on 27-DEC-2006 04:16

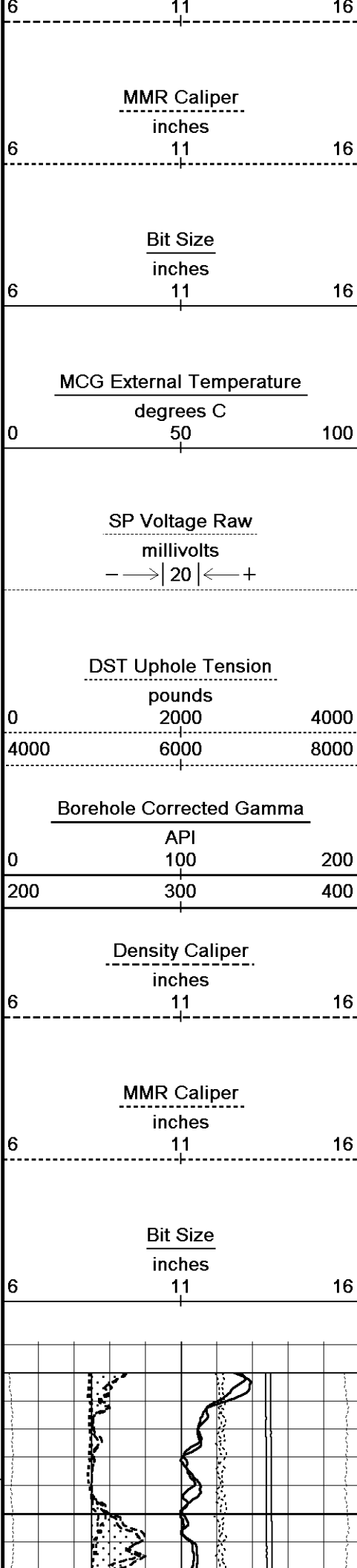
↑ MAIN PASS 1: 200 ↑

↓ REPEAT SECTION 1: 200 ↓
 MAIN PASS 1: 200

Depth Based Data - Maximum Sampling Increment 10.0cm
 Filename: C:\Logs\KAROON GAS\Scombo\SETUP7.dta
 Filename: C:\Logs\KAROON GAS\Scombo\SETUP8.dta
 System Configuration Dates: Logged 17-JUN-2004: Processed 17-JUN-2004: Plotted 17-JUN-2004:

Plotted on 27-DEC-2006 06:04
 Recorded on 27-DEC-2006 03:33
 Recorded on 27-DEC-2006 04:16





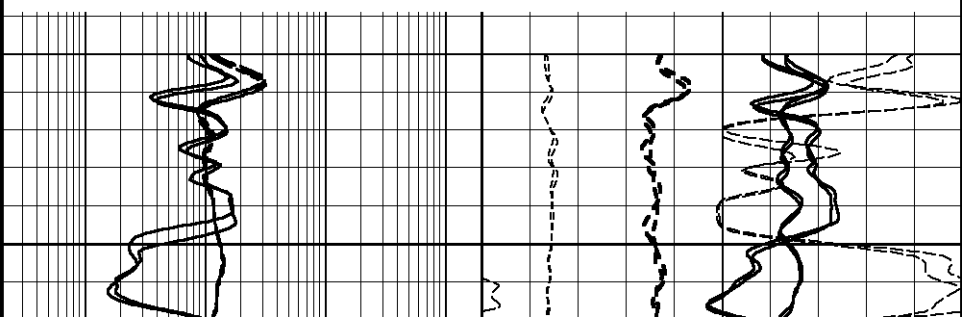
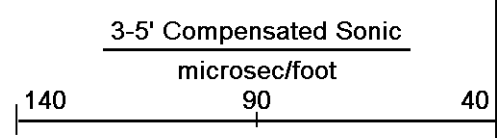
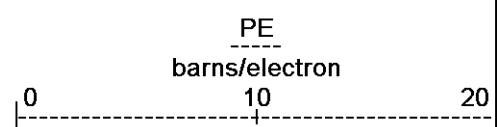
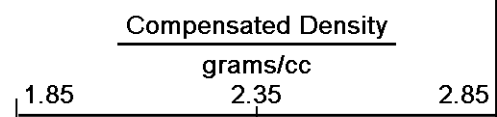
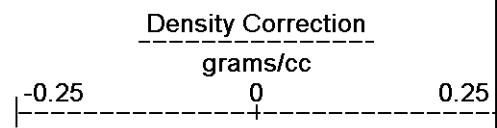
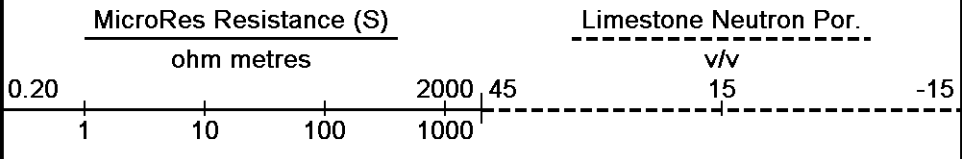
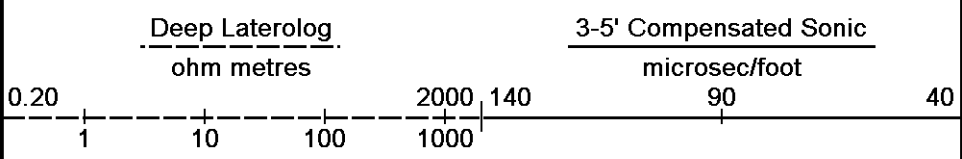
Annular Integral every 0.1 cu m

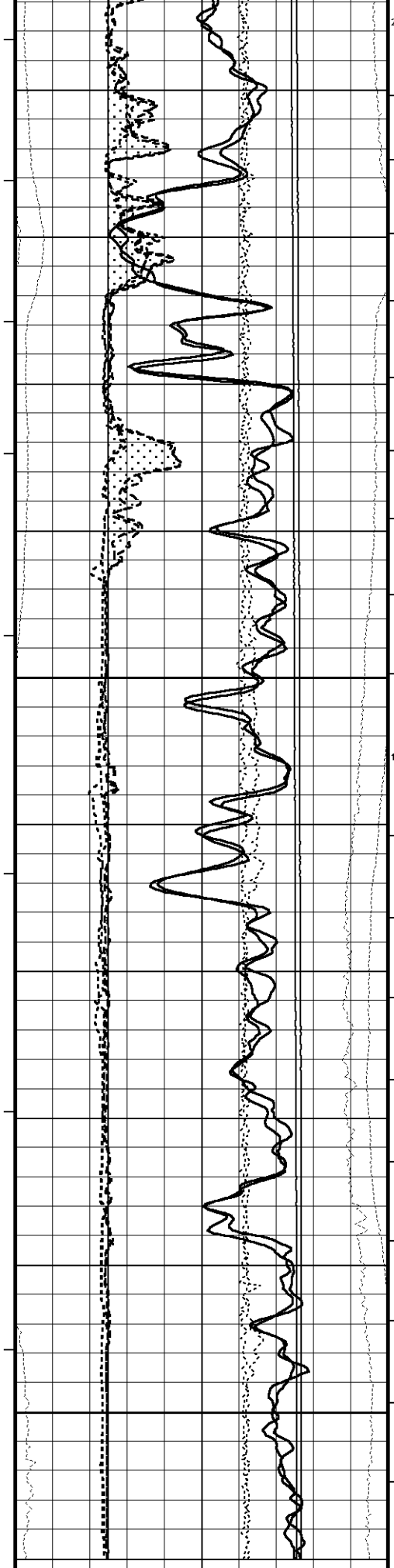
Borehole Temp in deg C

HVI every 0.1 cu m

Annular Integral every 0.1 cu m

Replay Scale 1:200





1880

75°

1890

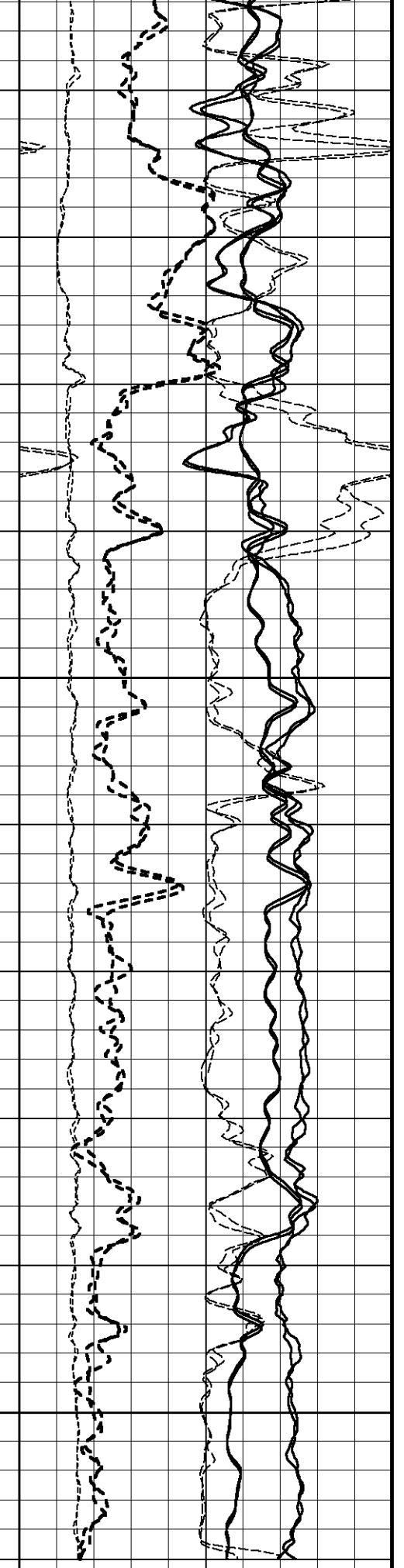
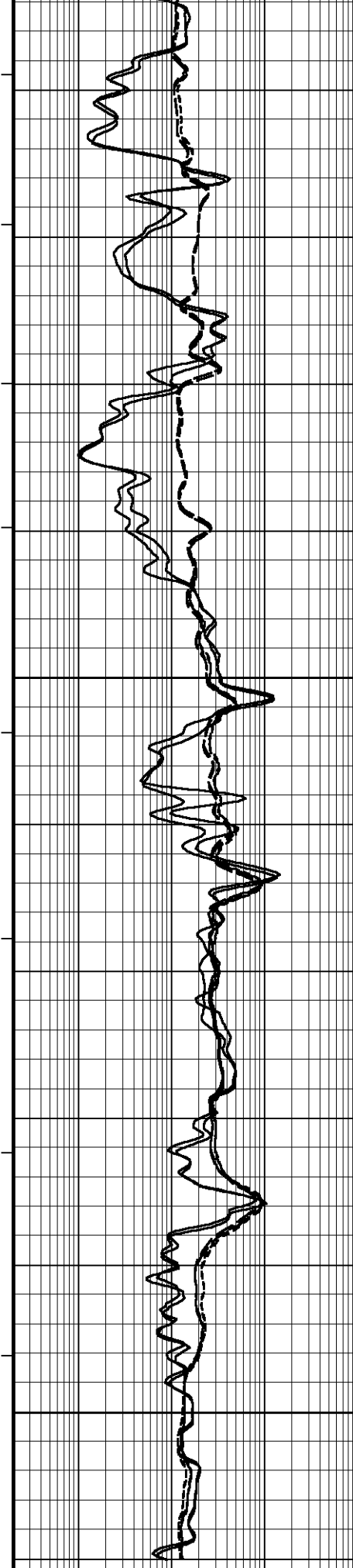
1900

1910

75°

1920

1930



1934

Depth in Metres

Timing Marks
every 60.0 sec

MCG External Temperature
degrees C
0 50 100

SP Voltage Raw
millivolts
- -> | 20 | <- +

DST Uphole Tension
pounds
0 2000 4000
4000 6000 8000

Borehole Corrected Gamma
API
0 100 200
200 300 400

Density Caliper
inches
6 11 16

MMR Caliper
inches
6 11 16

Bit Size
inches
6 11 16

MCG External Temperature
degrees C
0 50 100

SP Voltage Raw
millivolts
- -> | 20 | <- +

DST Uphole Tension
pounds
0 2000 4000
4000 6000 8000

Borehole Temp in deg C

HVI every 0.1 cu m

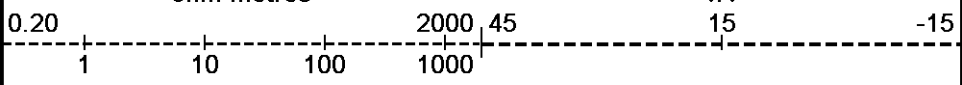
Annular Integral every 0.1 cu m

Borehole Temp in deg C

HVI every 0.1 cu m

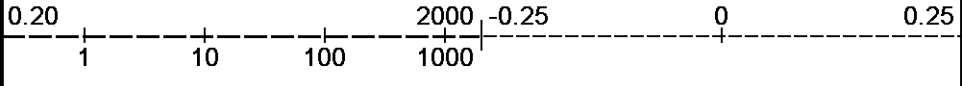
Shallow Laterolog
ohm metres

Limestone Neutron Por.
v/v



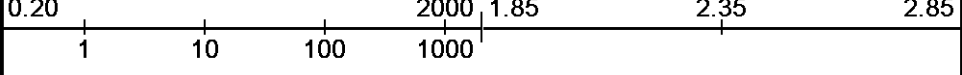
Deep Laterolog
ohm metres

Density Correction
grams/cc



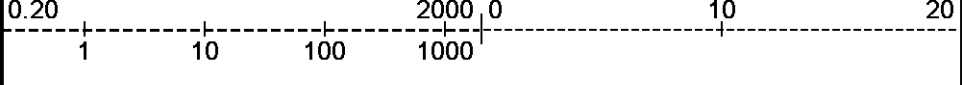
MicroRes Resistance (S)
ohm metres

Compensated Density
grams/cc



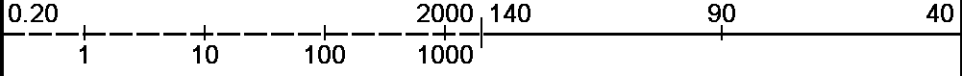
Shallow Laterolog
ohm metres

PE
barns/electron



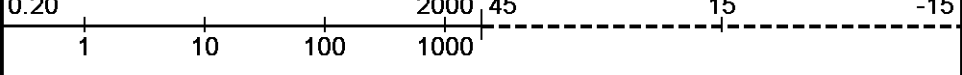
Deep Laterolog
ohm metres

3-5' Compensated Sonic
microsec/foot

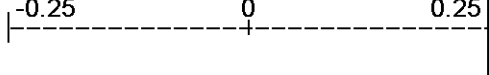


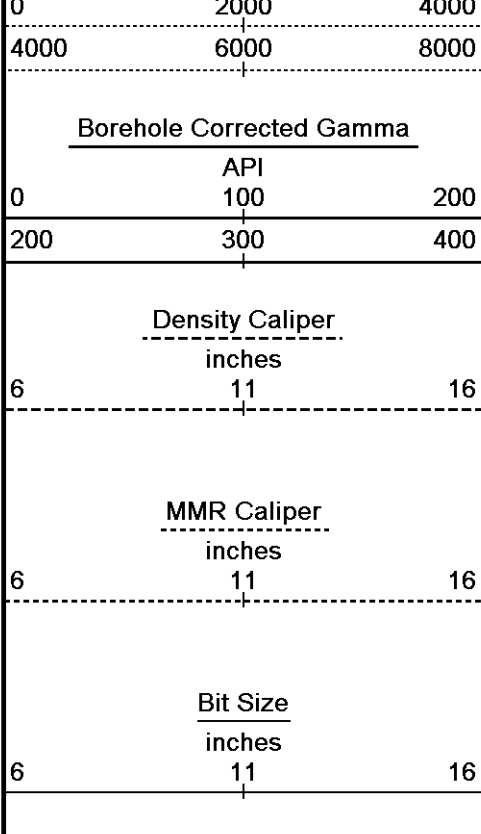
MicroRes Resistance (S)
ohm metres

Limestone Neutron Por.
v/v



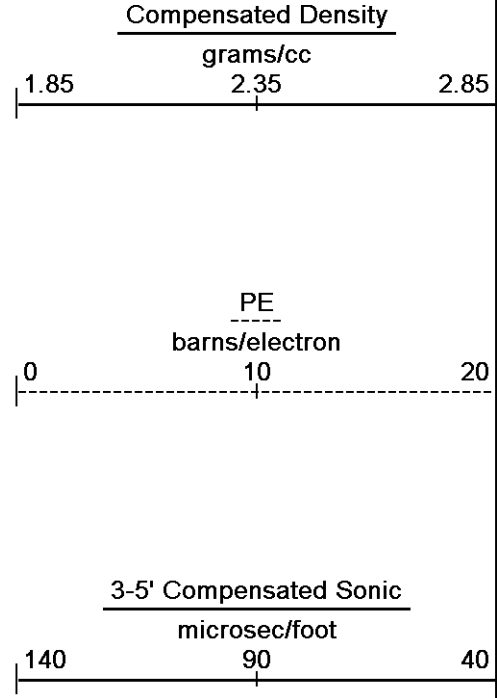
Density Correction
grams/cc





Annular
Integral
every
0.1 cu m

Replay
Scale
1:200

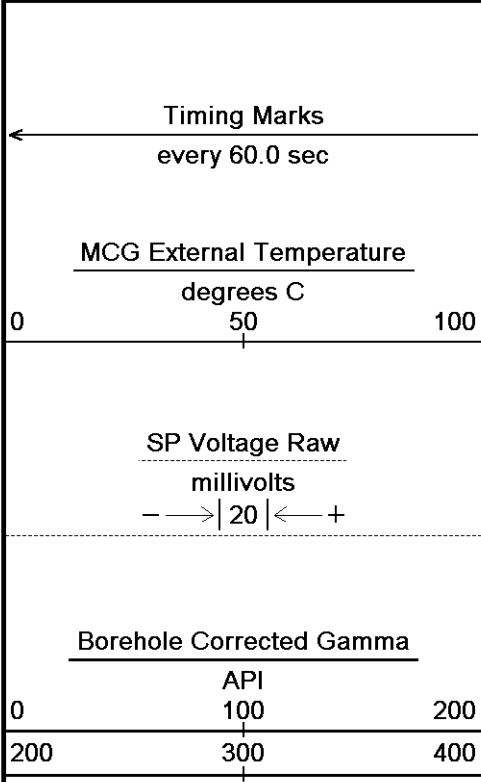


Depth Based Data - Maximum Sampling Increment 10.0cm
 Plotted on 27-DEC-2006 06:04
 Filename: C:\Logs\KAROON GAS\Scombo\SETUP7.dta
 Recorded on 27-DEC-2006 03:33
 Filename: C:\Logs\KAROON GAS\Scombo\SETUP8.dta
 Recorded on 27-DEC-2006 04:16
 System Configuration Dates: Logged 17-JUN-2004: Processed 17-JUN-2004: Plotted 17-JUN-2004:

↑ REPEAT SECTION 1: 200 MAIN PASS 1: 200 ↑

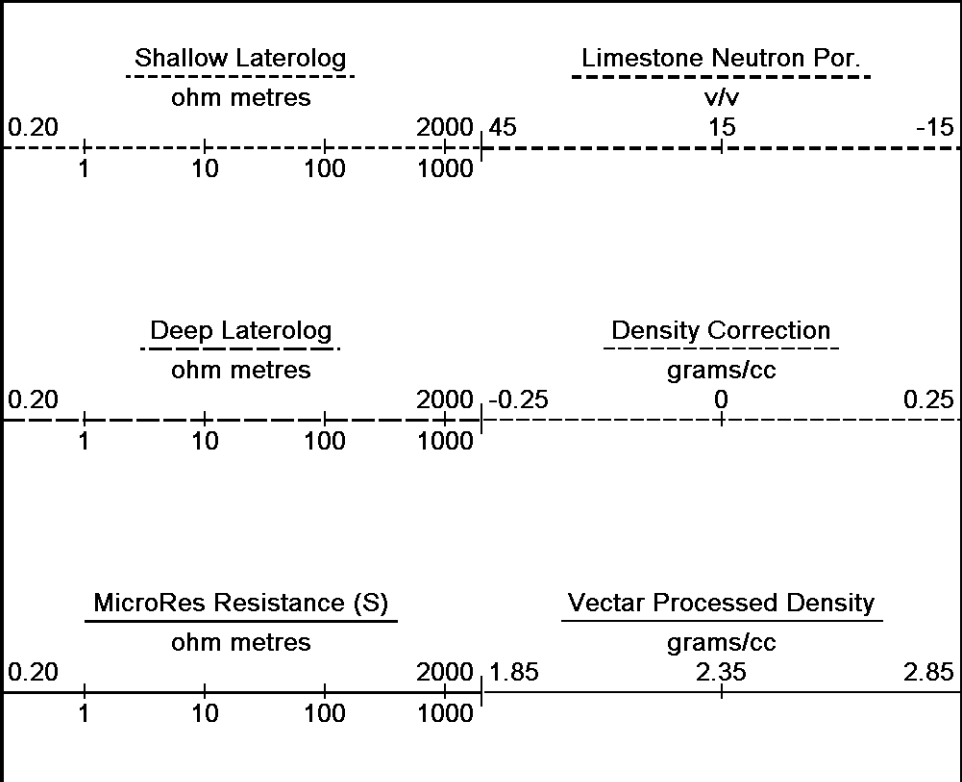
↓ HIRES SECTION 1: 200 ↓

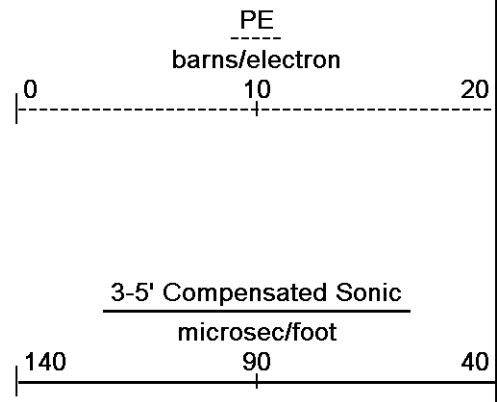
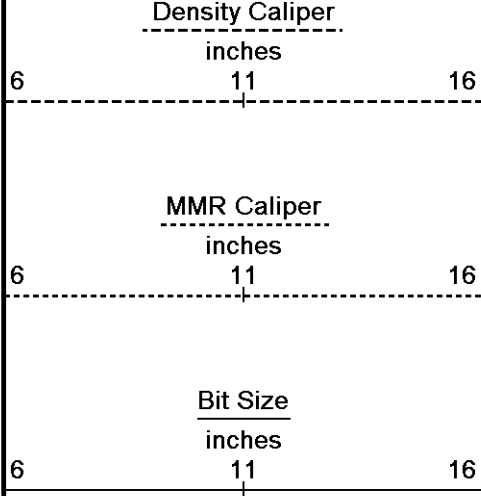
Depth Based Data - Maximum Sampling Increment 2.5cm
 Plotted on 27-DEC-2006 06:04
 Filename: C:\Logs\KAROON GAS\Scombo\SETUP6.dta
 Recorded on 27-DEC-2006 03:33
 System Configuration Dates: Logged 17-JUN-2004: Plotted 17-JUN-2004:



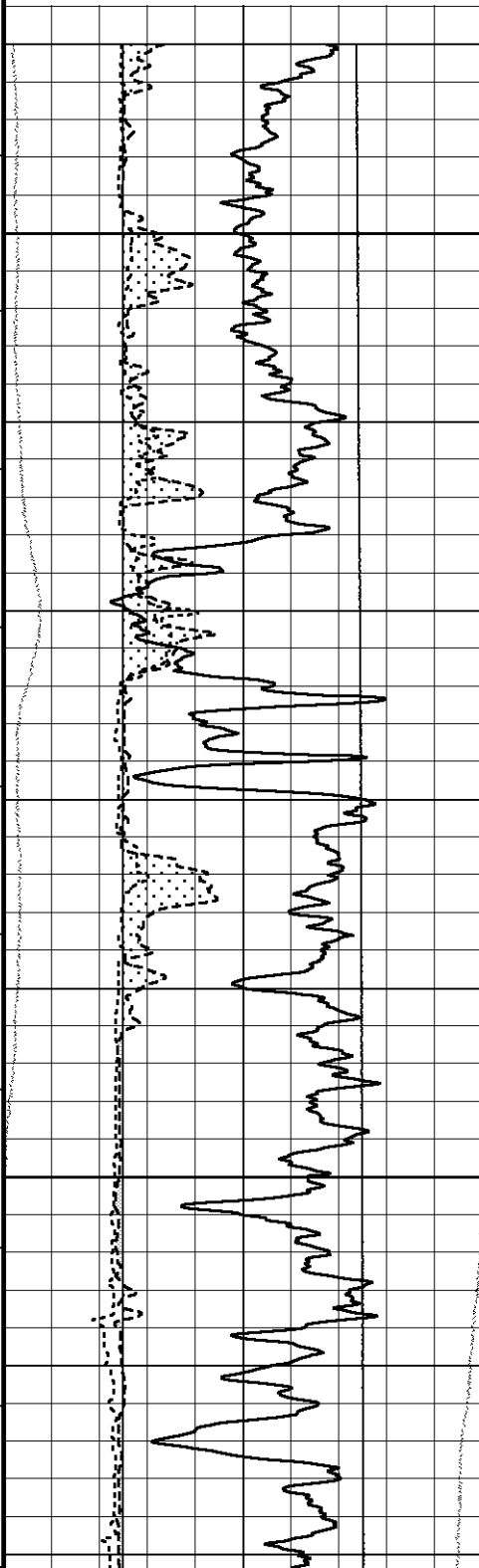
Depth
in
Metres

Borehole
Temp in
deg C





Replay
Scale
1:200



1870

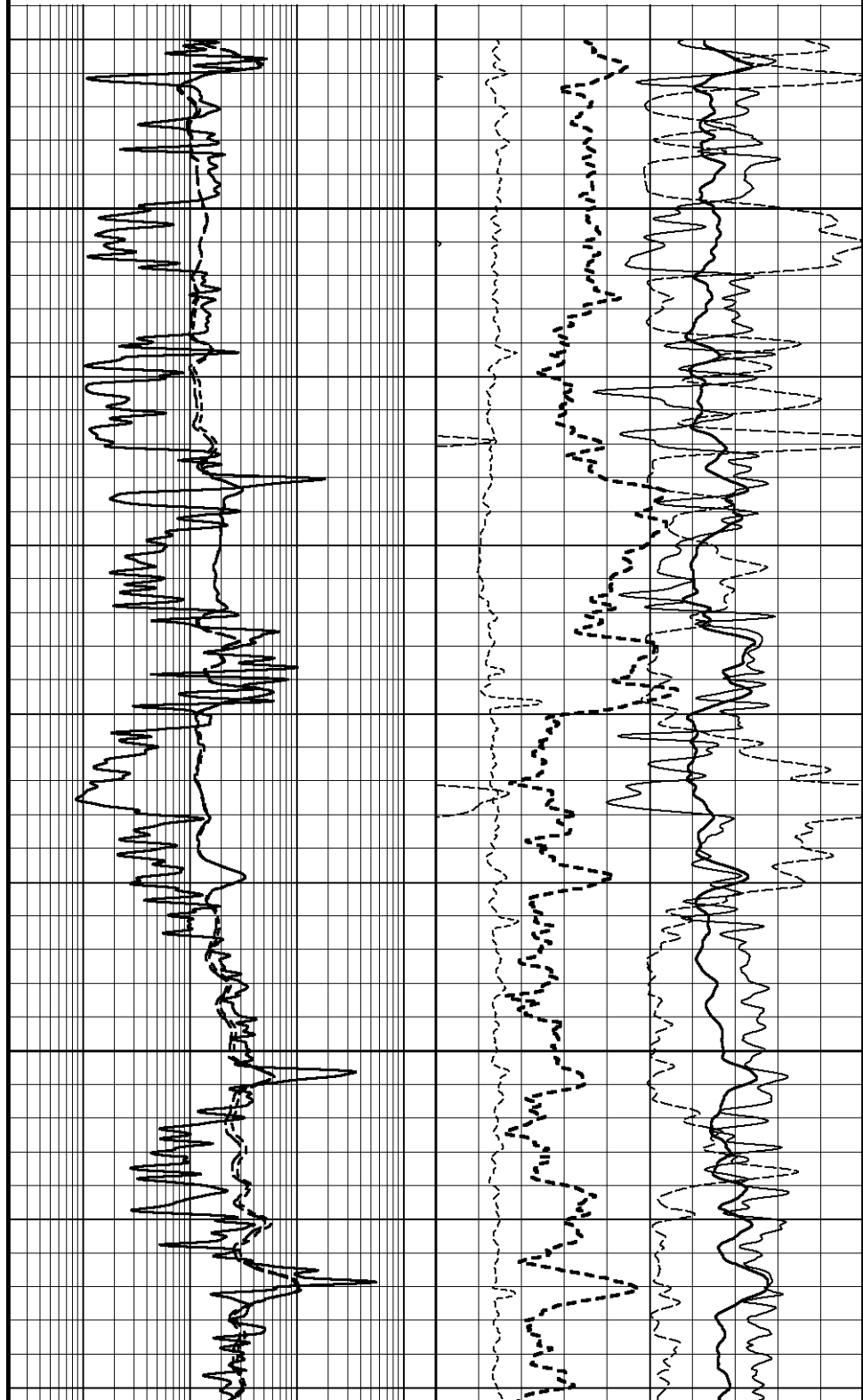
1880

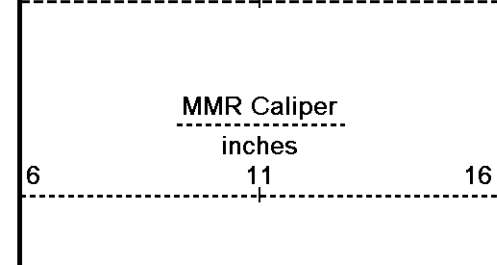
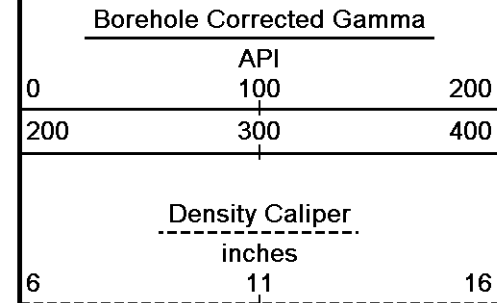
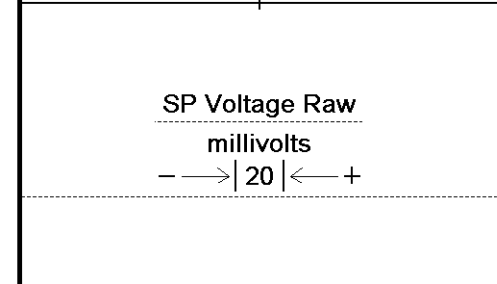
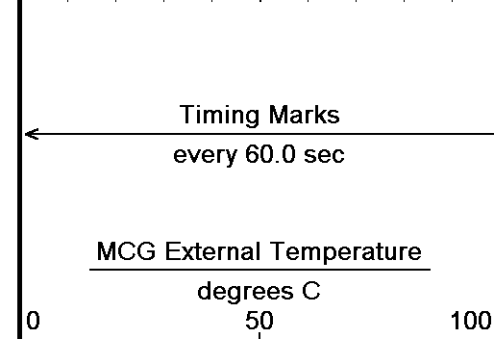
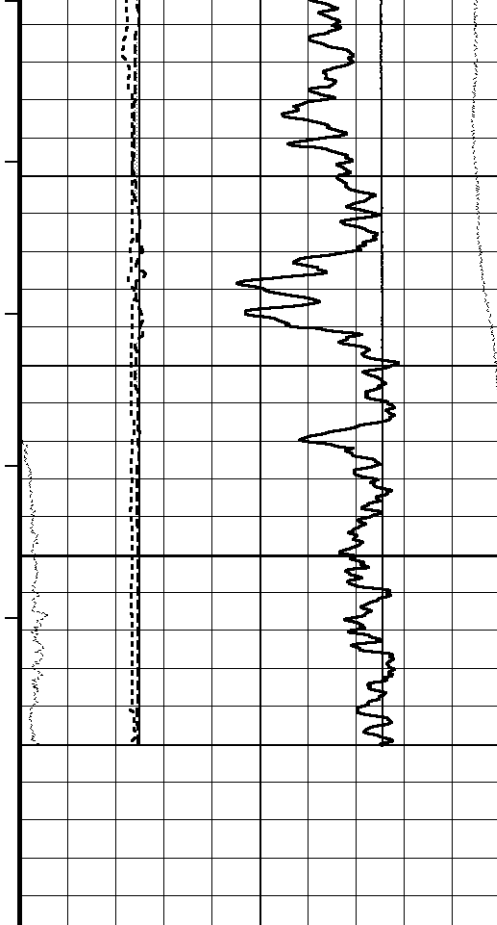
75°

1890

1900

1910





75°

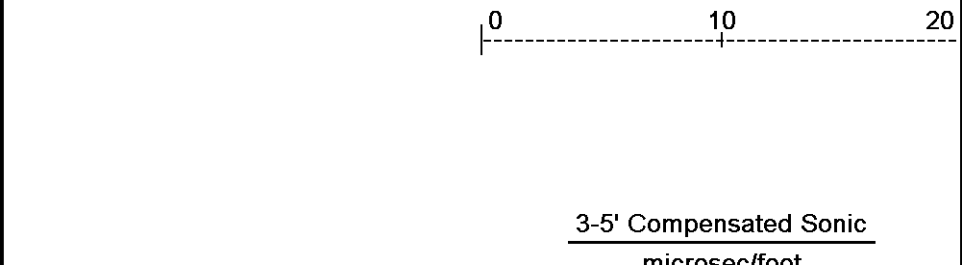
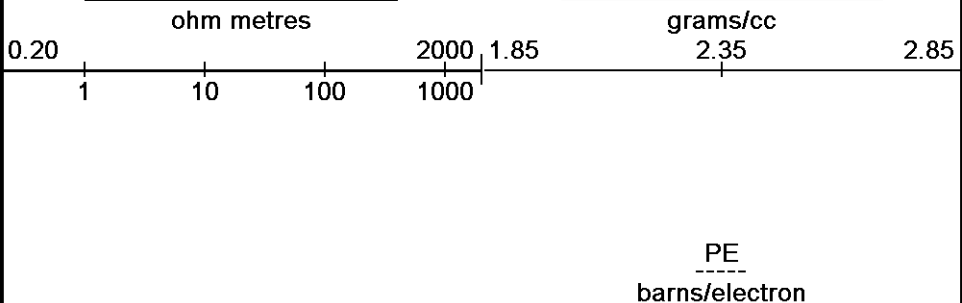
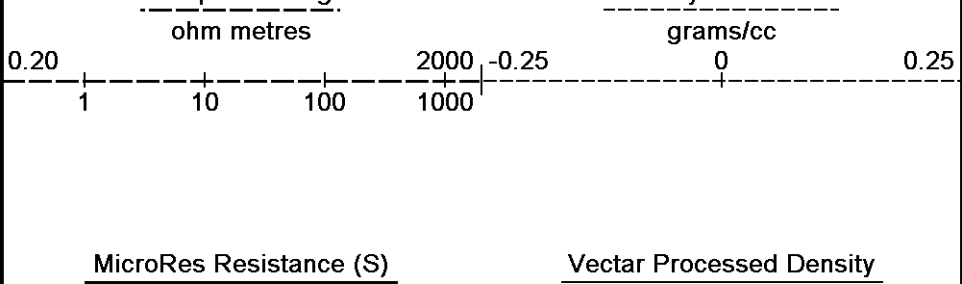
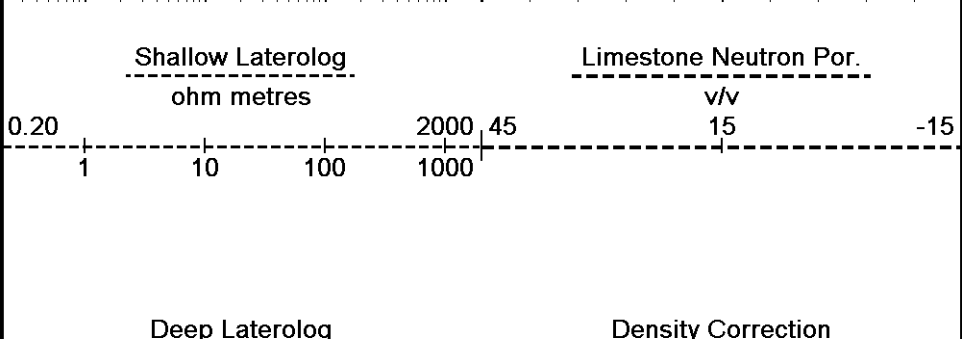
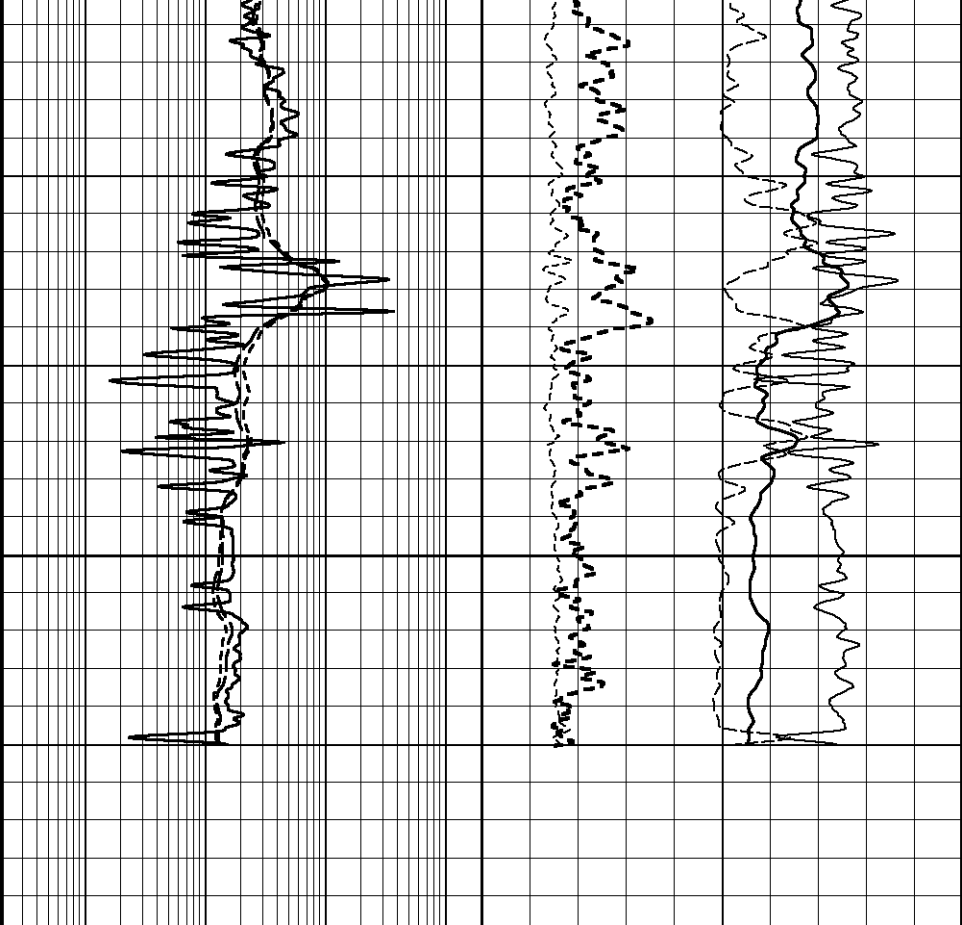
1920

1930

1934

Depth in Metres

Borehole Temp in deg C



Bit Size
inches
6 11 16

Replay
Scale
1:200

140 90 40
microseconds

Depth Based Data - Maximum Sampling Increment 2.5cm
 Filename: C:\Logs\KAROON GAS\Scombo\SETUP6.dta
 System Configuration Dates: Logged 17-JUN-2004: Plotted 17-JUN-2004:
 Plotted on 27-DEC-2006 06:04
 Recorded on 27-DEC-2006 03:33

↑ HIRES SECTION 1: 200 ↑

↓ MAIN PASS 1: 200
SCHLUMBERGER LOG 18-DEC-04 1: 200 ↓

Depth Based Data - Maximum Sampling Increment 15.2cm
 Filename: C:\Logs\KAROON GAS\Scombo\SETUP8.dta
 Filename: C:\Logs\KAROON GAS\Schlum\Well.dta
 System Configuration Dates: Logged 17-JUN-2004: Plotted 17-JUN-2004:
 Plotted on 27-DEC-2006 06:04
 Recorded on 27-DEC-2006 04:16
 Recorded on 18-Dec-2004

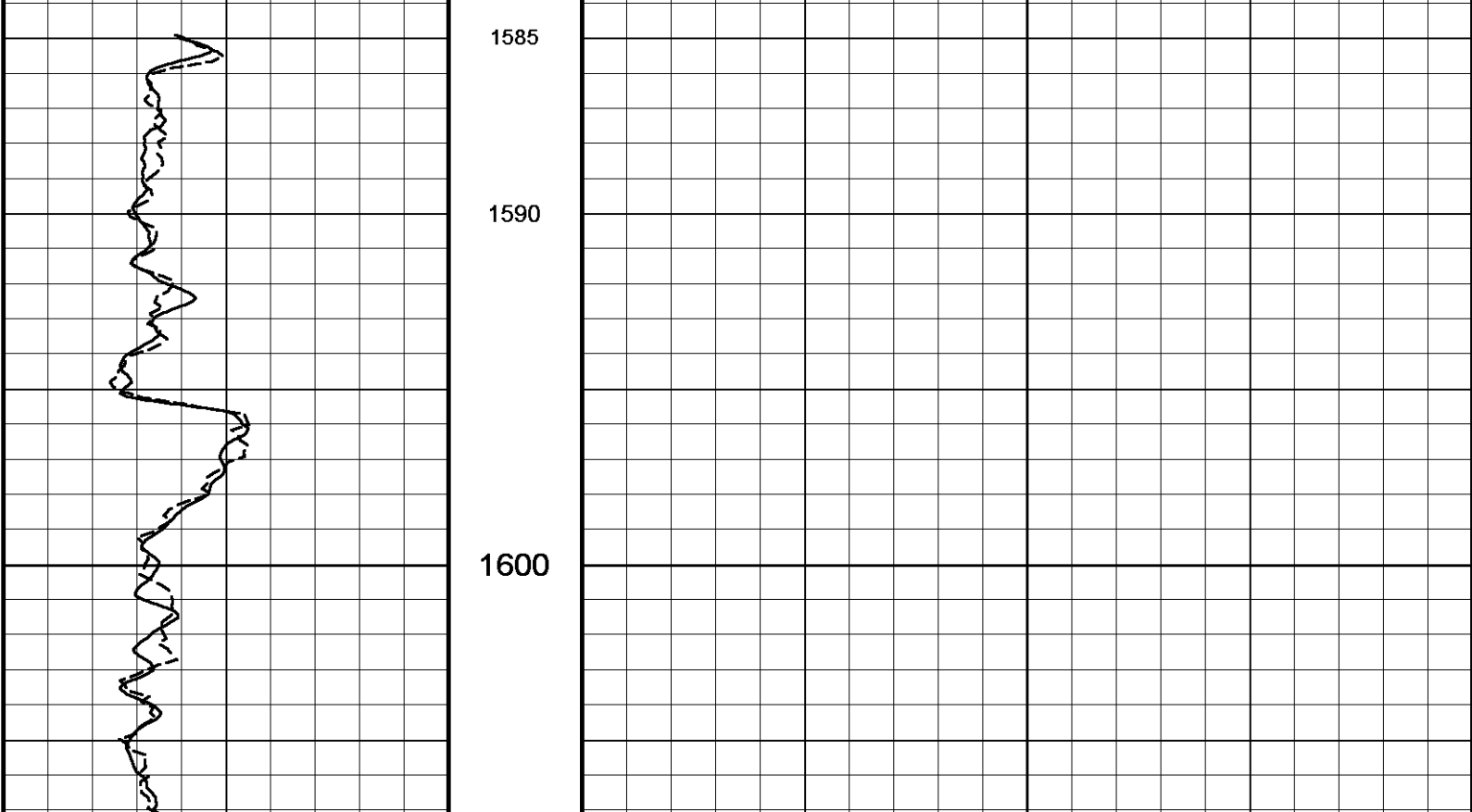
← Timing Marks
every 60.0 sec

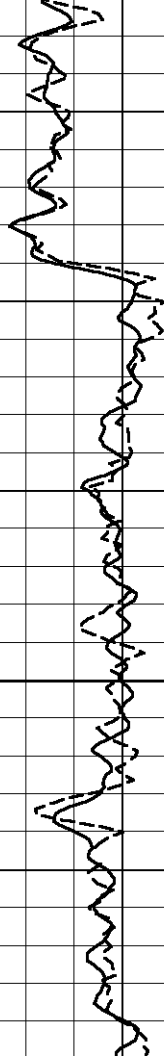
Borehole Corrected Gamma
 API
 0 100 200
 200 300 400

Gamma-Ray {F13.4}
 GAPI
 0 100 200

Depth
in
Metres

Replay
Scale
1:200





1610

1620

1630

1639
Depth
in
Metres

← Timing Marks
every 60.0 sec

Borehole Corrected Gamma

API

100

300

GAPI

100

0 200

200 400

0 200

Gamma-Ray {F13.4}

Replay
Scale
1:200

Depth Based Data - Maximum Sampling Increment 15.2cm

Filename: C:\Logs\KAROON GAS\Scombo\SETUP8.dta

Filename: C:\Logs\KAROON GAS\Schlum\Well.dta

System Configuration Dates: Logged 17-JUN-2004: Plotted 17-JUN-2004:

Plotted on 27-DEC-2006 06:04

Recorded on 27-DEC-2006 04:16

Recorded on 18-Dec-2004



MAIN PASS 1: 200
SCHLUMBERGER LOG 18-DEC-04 1: 200



DOWNHOLE EQUIPMENT

C:\Logs\KAROON GAS\Combo\SETUP8.dta

Compact Stiff Bridle Electrode Sub.
 MBE 17 Length: 3.76 m Weight: 94.8 lb

Compact Stiff Bridle Electrode Sub.
 MBE 19 Length: 3.76 m Weight: 94.8 lb

Compact Gamma
 MCG 162 Length: 2.65 m Weight: 63.9 lb

Compact Neutron
 MDN 133 Length: 1.53 m Weight: 50.7 lb

Compact Density/Caliper
 MPD 83 Length: 2.92 m Weight: 90.4 lb

Compact Sonic
 MSS 66 Length: 3.82 m Weight: 72.8 lb

Compact Upper Guard Sub.
 MUG 29 Length: 2.74 m Weight: 68.3 lb

Compact Laterolog Electrode Sub.
 MLE 29 Length: 3.76 m Weight: 92.6 lb

Compact Micro-Resistivity
 MMR 42 Length: 2.62 m Weight: 81.6 lb

Pressure Bung + Hole Finder
 HFS 99 Length: 0.28 m Weight: 6.6 lb



22.24 m DLSP - SP Voltage Raw

17.90 m GGCE - Borehole Corrected Gamma
 17.01 m CGXT - MCG External Temperature

16.03 m NPRL - Limestone Neutron Por.

13.35 m AVOL - Annular Volume
 13.35 m HVOL - Hole Volume
 13.35 m CLDC - Density Caliper
 13.14 m DEN - Compensated Density
 13.14 m DEN - Compensated Density
 13.14 m DCOR - Density Correction
 13.12 m PDPE - PE

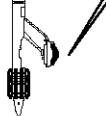
9.24 m DT35 - 3-5' Compensated Sonic

3.93 m DSLL - Shallow Laterolog
 3.93 m DLLL - Deep Laterolog
 3.93 m DGLL - Groningen Laterolog

0.00 m MRRS - MicroRes Resistance (S)
 Tool Zero (0.85m from bottom)

All measurements relative to tool zero.

Total Length: 27.84 m Weight: 716.5 lb



BEFORE SURVEY CALIBRATION

C:\Logs\KAROON GAS\Scombo\SETUP8.dta

General Constants All 000

General Parameters

Mud Resistivity	0.269	ohm-metres
Mud Resistivity Temperature	25.000	degrees C
Water Level	0.000	metres
Density/Neutron Processing	Wet Hole	

Hole/Annular Volume and Differential Caliper Parameters

HVOL Caliper 1	Density Caliper	
HVOL Caliper 2	None	
Annular Volume Diameter	6.630	inches
Caliper for Differential Caliper	None	

Rwa Parameters

Porosity used	Base Density Porosity
Resistivity used	Deep Laterolog
RWA Constant A	0.610
RWA Constant M	2.150

Gamma Calibration MCG 162

Field Calibration on 24-DEC-2006 12:36

	Measured	Calibrated (API)
Background	56	38
Calibrator (Gross)	1403	947
Calibrator (Net)	1347	909

Gamma Constants MCG 162

Gamma Calibrator Number	GRC-C060	
Mud Density	1.08	gm/cc
Caliper Source for Processing	Density Caliper	
Tool Position	Eccentred	
Concentration of KCl	0.00	kppm

COMPANY

KAROON GAS PTY. LTD.

WELL

MEGASCOLIDES-1 RE ST1

FIELD

WILDCAT

PROVINCE/COUNTY

VICTORIA

COUNTRY/STATE

AUSTRALIA

Elevation Kelly Bushing	125.20	metres	First Reading	1973.70	metres
Elevation Drill Floor	124.20	metres	Depth Driller	1980.00	metres
Elevation Ground Level	120.00	metres	Depth Logger	1974.55	metres



**DLL - MLL - SLL - GR - SONIC
DENSITY - NEUTRON**

